



Bear Care  
GROUP



**ABC - INDIA 2018**  
WILDLIFE SOS & BEAR CARE GROUP

## **Bamboo Enrichment**

# *How many ways can you use bamboo?*

## Basic Supplies Needed:

- Varied diameter and length of bamboo stalks
- Drill
- Assorted sizes of paddle bits
- Hand saw
- Sisal rope
- Hand pruners

Bamboo enrichment can easily be used to create a variety of enrichment items.

There are many ways to modify a basic bamboo stalk into enriching methods to present food items, scent, and novelty.

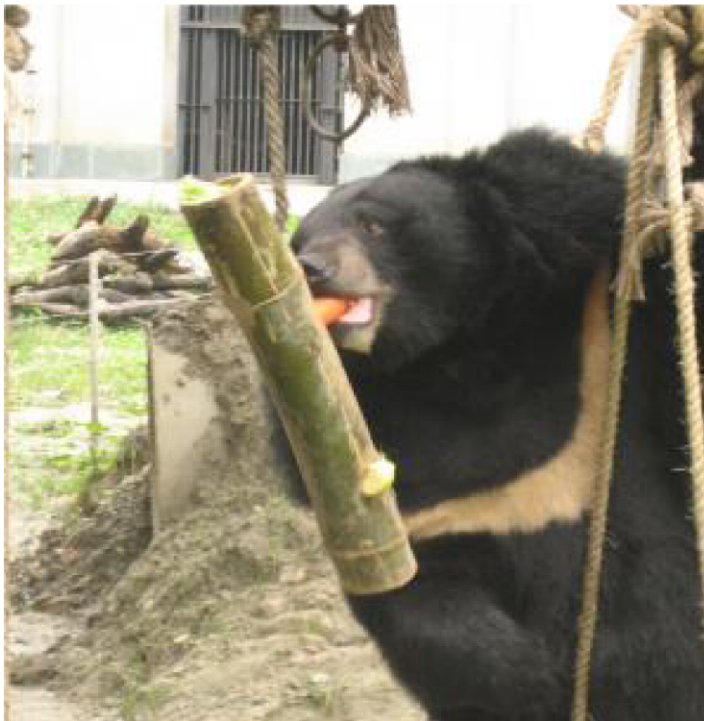
Here are a few ideas to get you started.



## **Design #1 Basic Feeder**

### Instructions:

- Cut bamboo stalk at least 2 inches in diameter and 18 plus inches long. Stalk must include at least 1 set of intra-nodes (space between 2 nodal ridges)
- Drill 1 or several holes in the intra-node space of the stalk. Holes size should be just larger than food item that will be used in the feeder
- Add food and hide feeder in the enclosure



### Change it up:

- Give loose
- Hang vertically
- Hang horizontally
- Vary size and number of holes
- Vary bamboo stalk diameter and length

Food Type: freeze liquids for a slow drip feeder, chow, insects, seeds, small fruits like grapes, small nuts

(Picture from Animals Asia)



## **Design #2- Lick Tubes**

### Instructions:

- Cut bamboo stalk at least 2 inches in diameter and 10 plus inches long
- Stalk should be open all the way through the length of the bamboo
- Smooth all edges and clean out inside of bamboo
- Add food and hide in the enclosure



(Picture from Animals Asia)

### Change it up:

- Freeze before giving feeder
- Skewer through a large fruit like melon or pumpkin, core can be frozen as a separate treat
- Slide over logs



Food types: honey, peanut butter, food pastes, jelly, icing, marshmallow fluff, sweet potato mash, banana mash



## **Design #3: Browse Bundle**

### Instructions:

- Cut bamboo stalk at least 2 inches in diameter and 10 plus inches long
- Stalk should be open all the way through the length of the bamboo
- Smooth all edges and clean out inside of bamboo
- Pull browse through both ends of the sleeve to create a tight bundle to hide in the enclosure



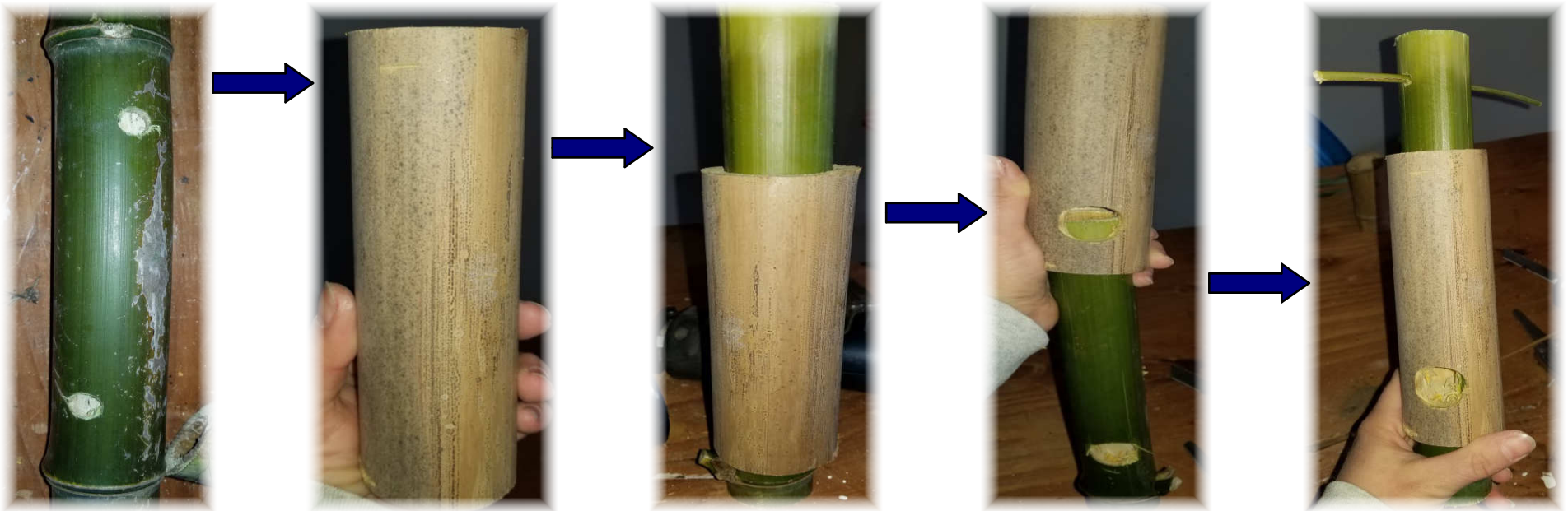
### Change it up:

- Use as a burlap sack sleeve
- Fire hose toy
- Paper bundle toy

## **Design #4- Sleeve Feeder**

### Instructions:

- Cut bamboo stalk at least 2 inches in diameter and 18 plus inches long. Stalk must include at least 1 set of intra-nodes (space between 2 nodal ridges)
- Drill 1 or several holes in the intra-node space of the stalk. Holes size should be just larger then food item that will be used in the feeder
- Cut a second bamboo stalk larger in diameter then the first and less than 18 inches long. Stalk should be open all the way through the length of the bamboo
- Slide sleeve over first bamboo stalk and mark locations of drilled holes. Remove and drill out matching holes
- Assemble the 2 stalks and drill out a small hole through the top of the feeder to insert a third thin stalk as a “bolt” to keep the feeders together
- Add chow and hide feeder in the enclosure



### Change it up:

- Insect Feeder
- Seed Dispenser



## **Design #5- Rain Stick**

### Instructions:

- Cut bamboo stalk at least 2 inches in diameter and 18 plus inches long. Stalk must include at least 1 set of intra-nodes (space between 2 nodal ridges). Cut both ends close to the nodal ridges
- On one end, drill a small hole that is just slightly larger than gravel
- Add a small handful of gravel into the stalk
- Cut a bamboo plug to fit tightly in the hole flush with the outside of the stalk
- Hide in the enclosure



### Change it up:

- Seed Dispenser- fill partially with seeds and hide in the enclosure
- Honey Drip- fill partially with honey. Hang, hole facing downward, in the enclosure or freeze first for a longer lasting feeder
- Juice Drip- fill partially with juice. Freeze and hang, hole facing downward, in the enclosure
- Scent Tubes- add a tiny amount of perfume, fur, hay from another animal, spices or an extract, then plug hole and hide in enclosure

## **Design # 6-Cup Feeder**

### Instructions:

- Cut bamboo stalk at least 2 inches in diameter and 6 plus inches long
- Stalk should be open on one end and cut on the opposite side of the nodal ridge at the other end
- Smooth all edges and clean out inside of bamboo
- Fill with treats and hide in the enclosure



### Change it up:

- Frozen Treat Cups- fill with juice or fruit mash and freeze
- Leaf Cups- fill with browse. Drizzle small amount of honey on browse to stick leaves in feeder
- Lick-smear the inside with honey, peanut butter, jelly, food mash
- Gelatin- fill cup with flavored gelatin and let gelatin harden



## **Design #6-Stackables**

### Instructions:

- Cut bamboo stalk at least 2 inches in diameter and 6 plus inches long
- Stalk should be open on one end and cut on the opposite side of the nodal ridge at the other end
- Smooth all edges and clean out inside of bamboo
- Drill a hole through the nodal ridge just large enough to slide sisal rope through
- String cups on sisal rope and hang in the enclosure



(Picture from Animals Asia)



### Change it up:

- Vary the number of cups and direction they are hung
- Smaller cups can slide inside larger cups
- Vary diameter of cups